



CGSI CFD Mobile App

Quick Start User Guide



Information in this document is deemed accurate at the time of publishing. However, the information and features elaborated in this user guide is subject to change without prior notice. No part of this document may be reproduced or transmitted in any form or by any means, electronic or mechanical, for any purpose, without the express written permission of CGS International Securities Singapore Pte. Ltd. The company may have patents or pending patent applications, trademarks, copyrights, or other intellectual property rights covering subject matter in this document. The furnishing of this document does not give you the license to these patents, trademarks, copyrights, or other intellectual property.

For more information, please contact us:

Email: sg.cfdquery@cgsi.com

Website: <https://cfd.cgsi.com.sg>

CGS CFD Hotline: +65 6210 8882

Order Assistance via Dealing Desks - Day Markets (7.00 am to 5.00 pm SGT)

- +65 6232 5671
- +65 6210 8472
- 1800 6227 272 (SG Toll Free)
- 1800 882 261 (MY Toll Free)

Order Assistance via Dealing Desks - Night Markets (5.00 pm to 4.00am SGT) *Subject to daylight savings

- +65 6232 5888

Contents

1. Getting Started	4
2. Key Features	6
2.1 Watchlist	6
2.1.1 User Configurable Watchlist	6
2.1.2 System Watchlist	8
2.2 Security Details	9
2.2.1 Comprehensive Details	9
2.2.2 Charting	10
2.2.3 Market Depth	11
2.2.4 Course of Sales	12
2.2.5 News	13
2.3 Trading	14
2.4 Orders	16
2.5 Portfolio	17
2.6 Market Activity	18
2.7 Alerts	19

1. Getting Started

Step 1: Download the CGS CFD Mobile application from Apple App Store or Google Play Store by searching for “CGS CFD”.



Step 2: Launch the application and fill in your credentials to login. This will then redirect you to another page where you can fill up your 2FA OTP using Google Authenticator.



Login to **CFD Portal**

Username*

▲ Username is required.

Password*

▲ Password is required.

Login

[Can't log in?](#)

[Change password](#)



Login to **CFD Portal**

For security reasons, please enter your
2FA One-time password.

Login

[Dont have access to your 2FA?](#)

[Back](#)

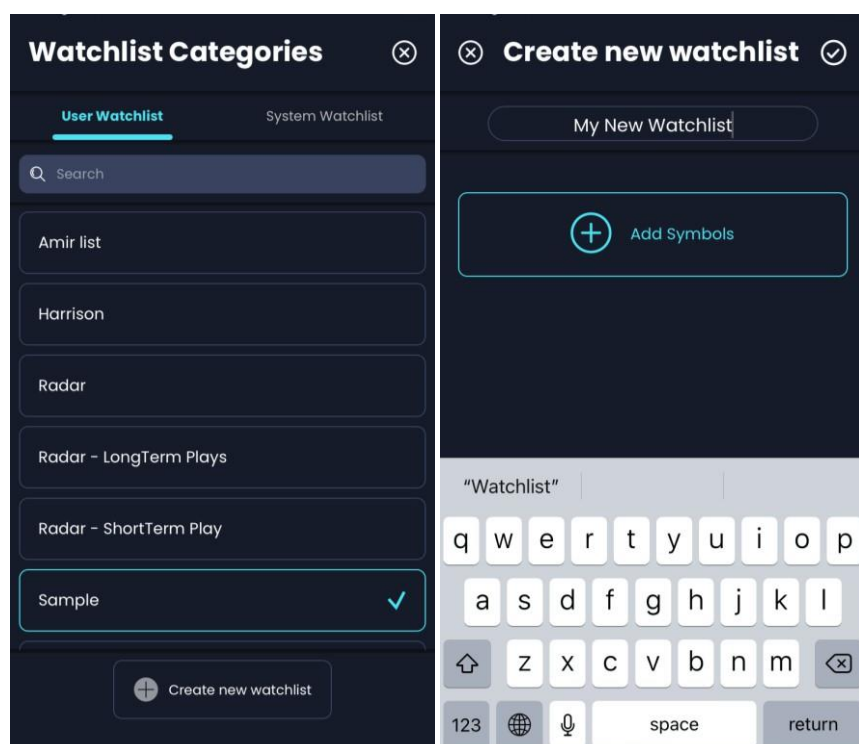
Please note: You will only be able to log in to either CFD Viewpoint on your computer or Apple/Android mobile device, but not both at the same time. Prior to logging into the mobile app, users need to ensure they are logged off from Viewpoint.

2. Key Features

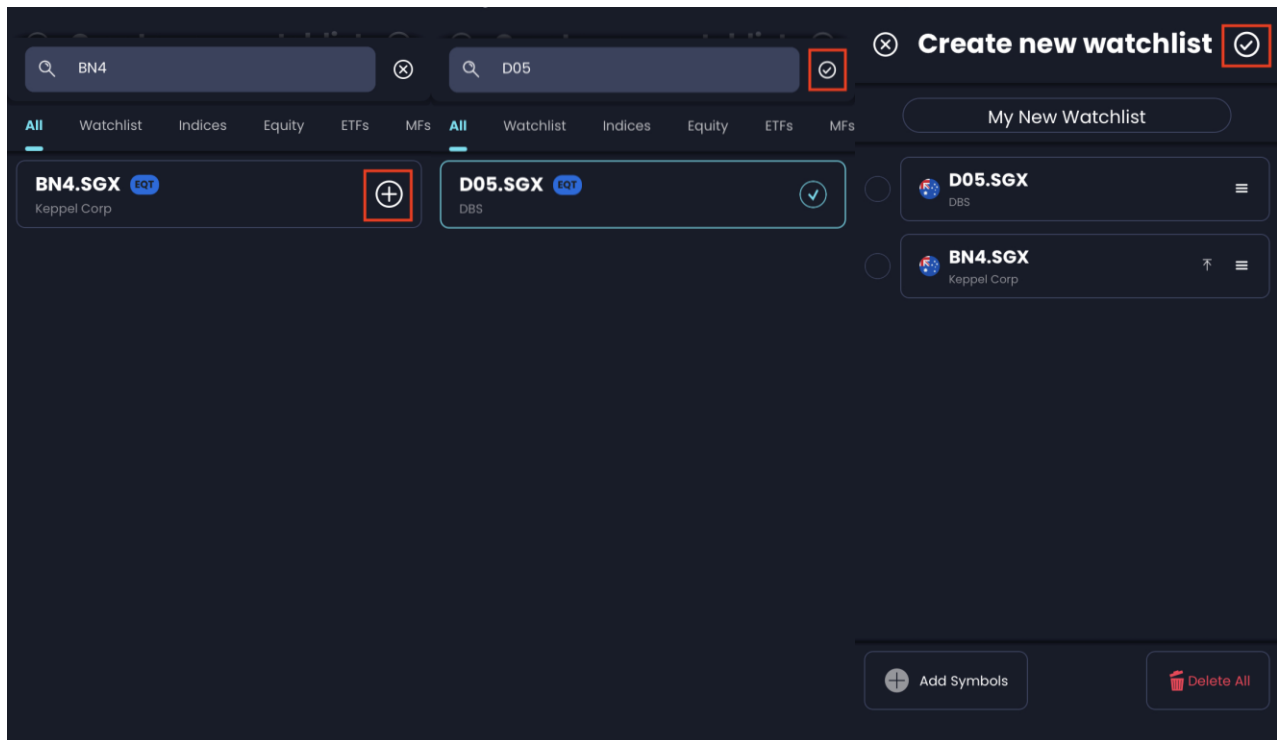
2.1 Watchlist

2.1.1 User Configurable Watchlist

Easily build your new watchlist comprising your favourite equities across global exchanges by clicking on the book icon, select **User Watchlist** and click **Create new watchlist**. Next, select **Add Symbols** and search for the securities that you would like to add to the watchlist.

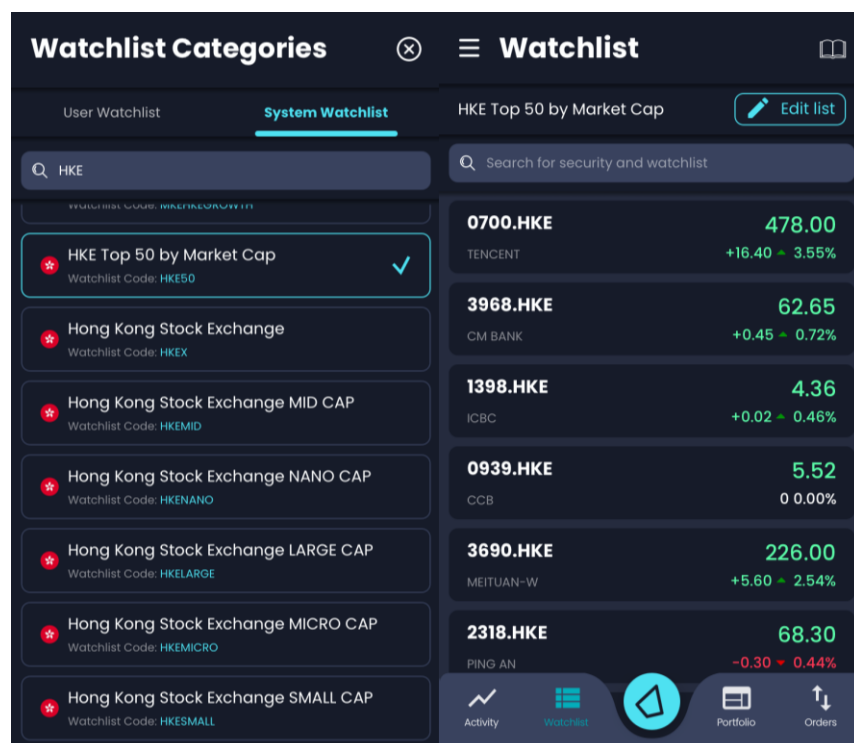


Select the + icon to add the security to your watchlist. Once you are done adding all the securities to your watchlist, select the tick icon. Select the tick icon to confirm the creation of the new watchlist.



2.1.2 System Watchlist

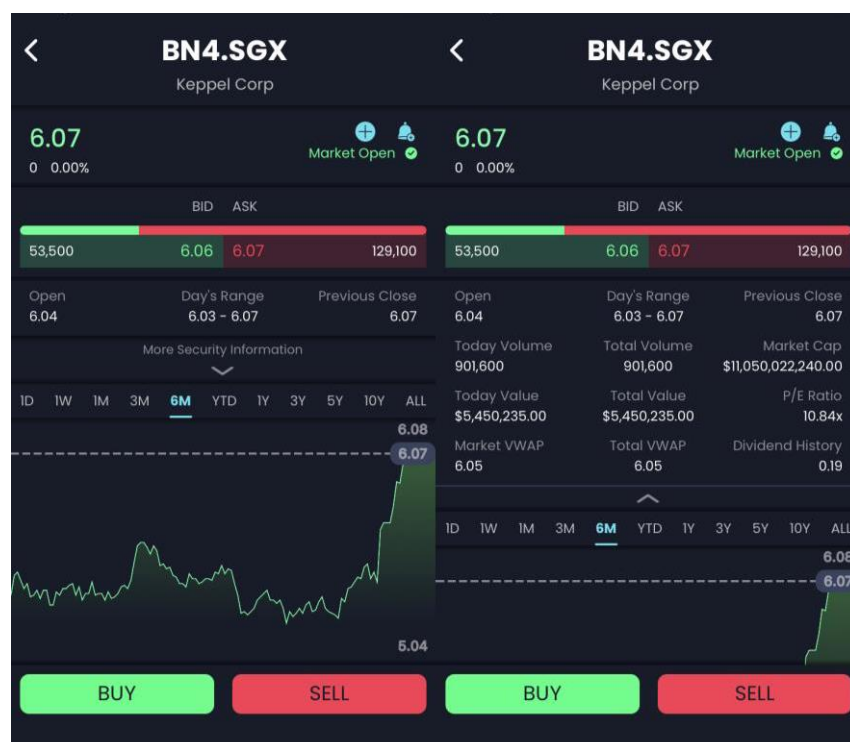
Our trading app also allows you to have quick one touch access to search for pre-defined system watchlists such as Hong Kong Exchange Top 50 by Market Cap to assess the pulse of the markets.



2.2 Security Details

2.2.1 Comprehensive Details

Our security details screen allows traders to quickly view most important trading information at a single glance.



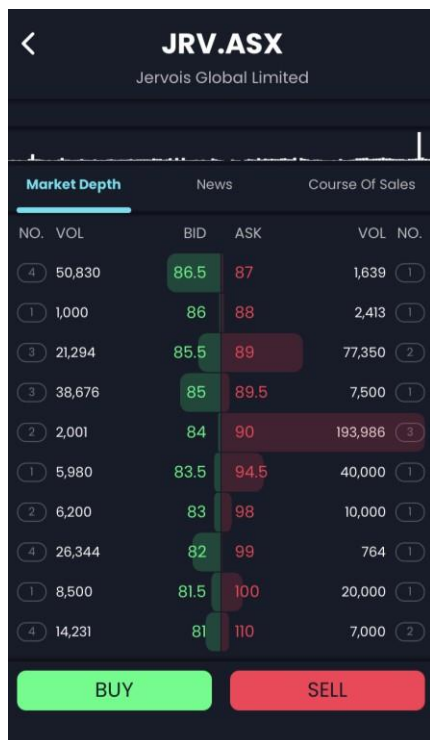
2.2.2 Charting

Our charts are embedded within the security details for quick viewing and filter by time frames.



2.2.3 Market Depth

Our visual market depth information allows us to quickly assess demand across the book and identify the optimal entry/exit points. Subscription to level 2 data is required in order to display market depth.



2.2.4 Course of Sales

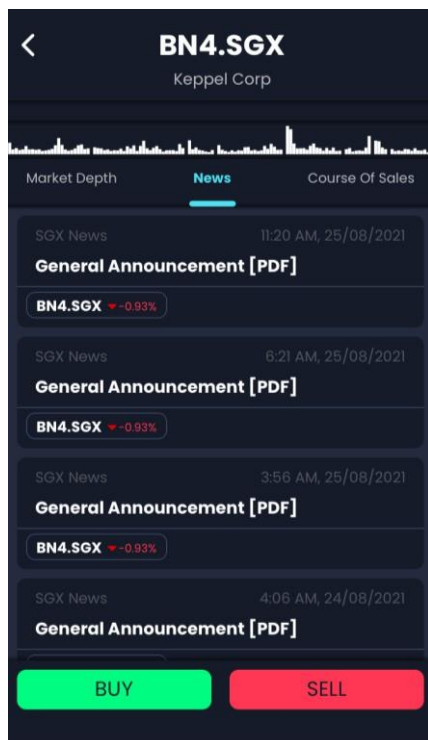
Our course of sales screen allows you to review past transactions quickly to identify selling pressures and buying demand across the trading session.



JRV.ASX			
Jervois Global Limited			
Market Depth	News	Course Of Sales	
FILLED TIME	SIDE	QUANTITY	FILLED
16:10:30	Match	1	86.5
16:10:30	Match	124	86.5
16:10:30	Match	106	86.5
16:10:30	Match	4,500	86.5
16:10:30	Match	10,554	86.5
16:10:30	Match	3,085	86.5
16:10:30	Match	1,897	86.5
16:10:30	Match	5,233	86.5
16:10:30	Match	3,537	86.5
16:10:30	Match	4,051	86.5
16:10:30	Match	4,416	86.5
16:10:30	Match	230	86.5
BUY		SELL	

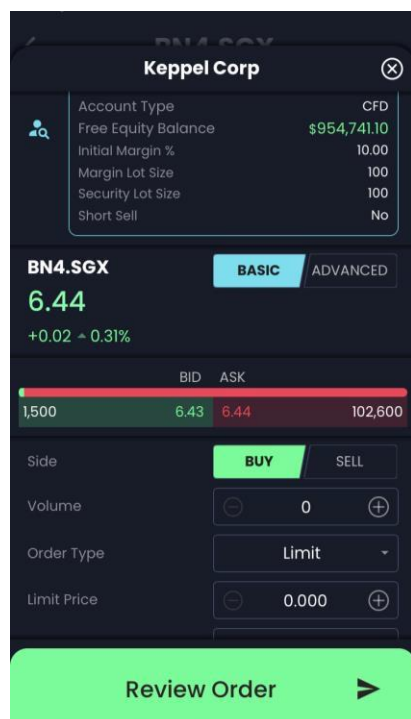
2.2.5 News

In addition to trading market data, our app allows you to access related news and key announcements such as corporate actions and earnings results.

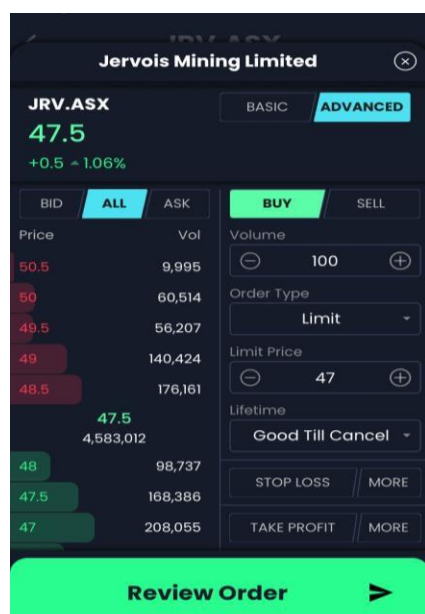


2.3 Trading

Our trade screen is designed to facilitate quick order entry on the go.



In addition, the screen provides a quick toggle to enable traders to easily switch to advanced order entry view. Side-by-side visuals of the market depth allows traders on the move to assess optimal order entry point during market volatility.



Traders are able to submit stop loss and take profit orders which will allow traders to close positions optimally based on their trading strategies.

The image displays two identical trading order entry forms for 'Keppel Corp' side-by-side. Each form has a title bar with a close button (X). The left form is configured for a 'STOP LOSS' order, while the right form is for a 'TAKE PROFIT' order. Both forms include the following fields and controls:

- Volume:** A numeric input field set to '0' with minus and plus buttons.
- Order Type:** A dropdown menu set to 'Limit'.
- Limit Price:** A numeric input field set to '0.000' with minus and plus buttons.
- Lifetime:** A dropdown menu set to 'End of Day'.
- STOP LOSS / TAKE PROFIT:** A large blue button at the top of the order-specific section.
- MORE:** A smaller blue button next to the main order type button.
- Review Order:** A large blue button at the bottom of the form with a right-pointing arrow.

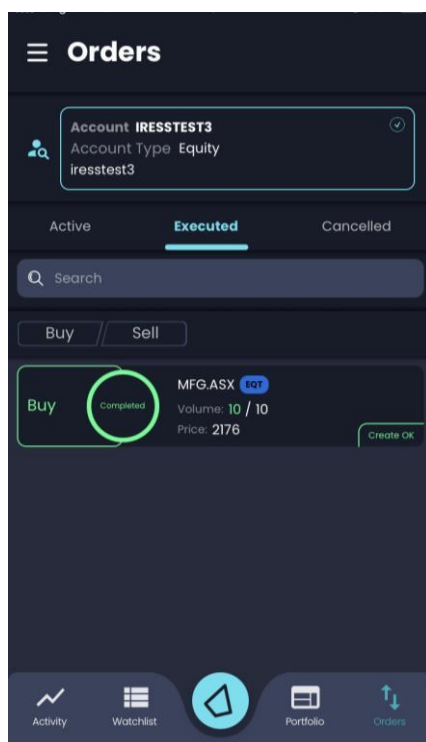
The forms are visually identical in layout and field names, differing only in the specific order type and the corresponding main button label.

2.4 Orders

Our orders pad is designed to allow traders to monitor active order status with order completion visual aids for partial orders.

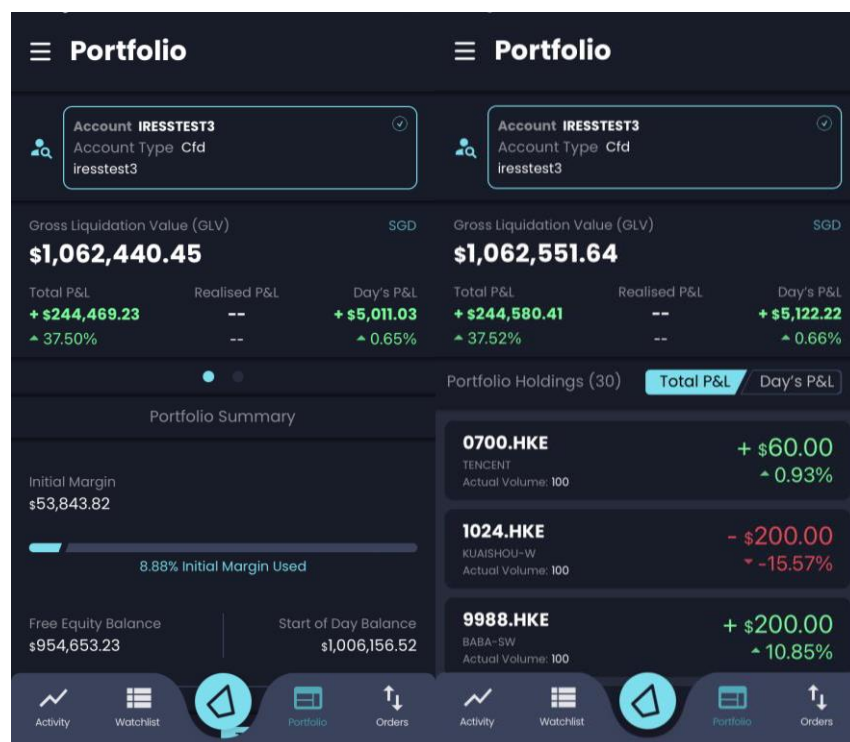
Quick Order Status filters tab at the top allow traders to review executed and cancelled orders for determining the next best course of actions.

A search filter is also designed to allow traders to quickly search by specific stock and retrieve order status for review, amendment or cancellation.



2.5 Portfolio

Our portfolio screen is designed to provide a 360-degree visual view of the portfolio with key information presented such as market value and total/day's P&L at the top.



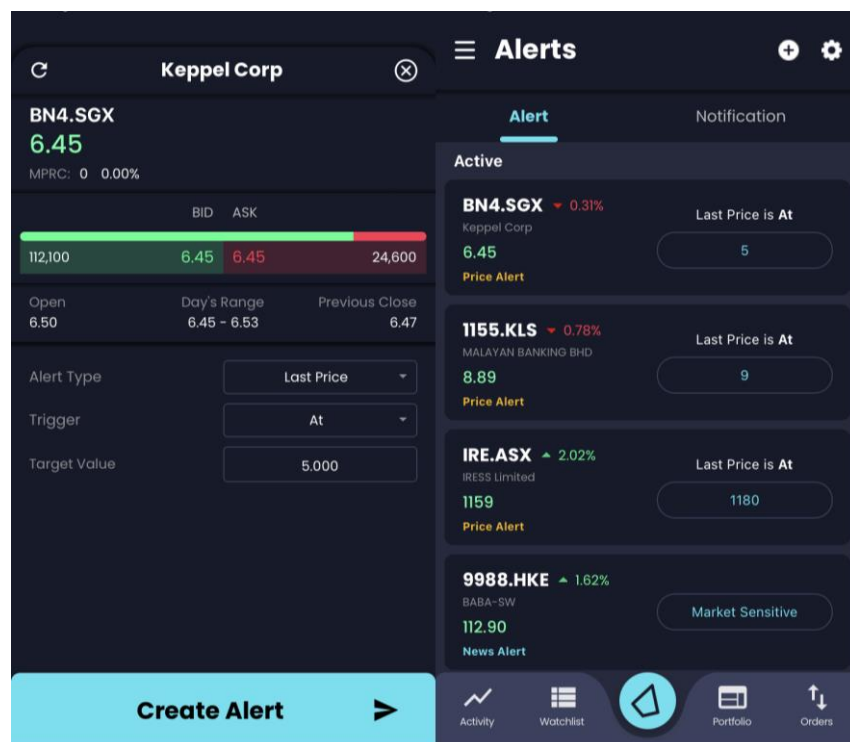
2.6 Market Activity

Our market activity tab empowers the investor to monitor top market activity across global exchanges.



2.7 Alerts

Never miss a beat with the alerts functionality - set alerts on various parameters such as prices and news to keep up to date with the market.



<End of Document>